






The Queen’s Official Birthday (13 June)

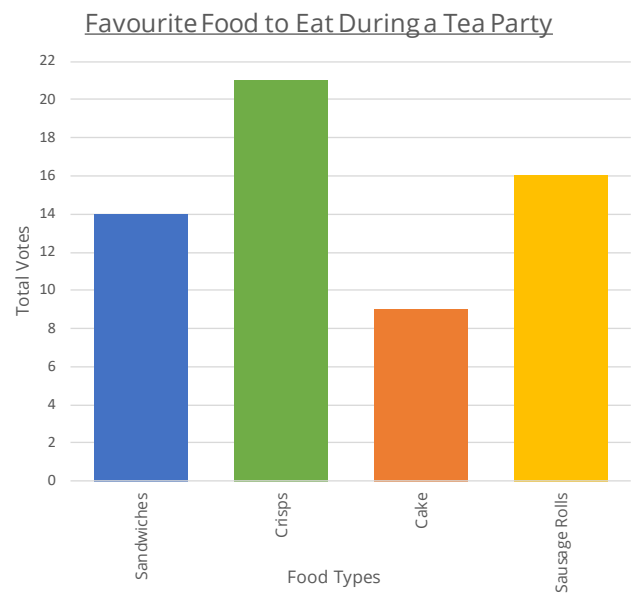
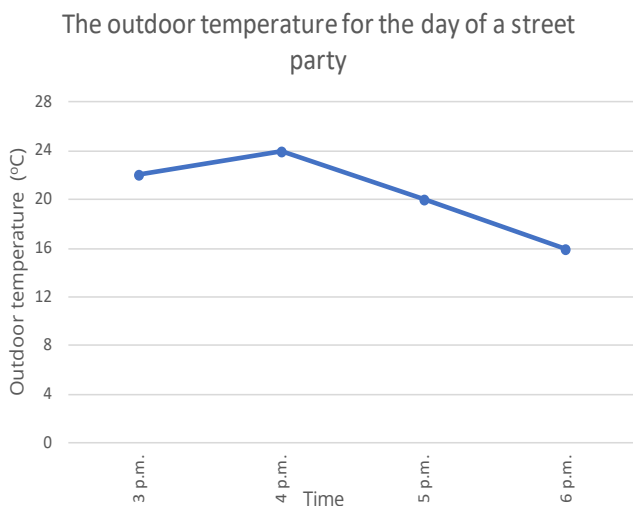
The Queen was born in Mayfair in 1926. When she was born, she was not expected to become Queen (her father was not next in line to the throne). In 1936 her Uncle abdicated the throne, making her father King. Elizabeth then became Queen on 6 February 1952. She has since ruled for longer than any other Monarch in British history.

Use the table and graph to answer the questions on the following page.

A pictogram to show the choice of favourite drinks by two classes in Year 4

Drink	Number of Votes
Lemonade	
Milkshake	
Water	
Cola	

 = 4 votes



A table to show the total number of guests who attended parties celebrating the Queen’s official birthday across the South of England.

Party Type	Total Number of Guests (Saturday)	Total Number of Guests (Sunday)
Garden Party	1,240	1,300
Street Party	2,800	1,055
Dinner Party	1,561	2,194
Picnic Party	1,195	1,340

**The Queen’s Official Birthday (13 June)**

The Queen was born in Mayfair in 1926. When she was born, she was not expected to become Queen (her father was not next in line to the throne). In 1936 her Uncle abdicated the throne, making her father King. Elizabeth then became Queen on 6 February 1952. She has since ruled for longer than any other Monarch in British history.

**Solve each question below. Then use the key to find the answer to the joke. Letters can be used more than once.**

**1.** Pictogram: How many people voted in the favourite drink survey altogether?

**2.** Line graph: What was the outdoor temperature, in °C, at 6 p.m.?

**3.** Table: How many fewer guests attended the Sunday Picnic Party rather than the Saturday one?

**4.** Bar chart: How many people voted for crisps in the survey?

**5.** Line graph: What was the difference, in °C, between the hottest and coldest temperatures during the street party?

**Did you know?**  
During World War Two, the Queen (then princess) served her country as an auto mechanic.

**6.** Table: How many guests attended the Sunday Street Party?

**7.** Bar chart: How many votes did sandwiches and sausage rolls receive altogether?

**8.** Pictogram: How many more people preferred lemonade to milkshake?

**9.** Pictogram: The most popular drink received \_\_\_ votes.

**10.** Table: How many more people attended the Sunday Garden Party rather than the Saturday one?

**11.** Bar chart: The least popular food received \_\_\_ votes.

**12.** Line graph: By how much did the temperature, in °C, drop in the last hour of the Street Party?

**13.** Table: How many people attended Saturday’s Dinner Party?

**14.** Bar chart: How many people voted in the favourite food survey altogether?

A	B	C	D	E	F	G	H	I	J	K	L	M
60	50	16	1,240	1,561	1,055	2,800	1,300	32	58	14	9	6
N	O	P	Q	R	S	T	U	V	W	X	Y	Z
42	8	21	18	30	2,194	4	145	1,195	20	24	22	12

**What is the Queen’s favourite drink?**

\_\_\_\_\_  
 1      2   3   4      5   6      7   8   9   10   11      12   13   14

The Queen’s Official Birthday (13 June)

- |     |   |       |   |
|-----|---|-------|---|
| 1.  | Pictogram: How many people voted in the favourite drink survey altogether?  | 60    | A |
| 2.  | Line graph: What was the outdoor temperature, in °C, at 6 p.m.?   | 16    | C |
| 3.  | Table: How many fewer guests attended the Sunday Picnic Party rather than the Saturday one?                       | 145   | U |
| 4.  | Bar chart: How many people voted for crisps in the survey?  | 21    | P |
| 5.  | Line graph: What was the difference, in °C, between the hottest and coldest temperatures during the street party? | 8     | O |
| 6.  | Table: How many guests attended the Sunday Street Party?  | 1,055 | F |
| 7.  | Bar chart: How many votes did sandwiches and sausage rolls receive altogether?                                    | 30    | R |
| 8.  | Pictogram: How many more people preferred lemonade to milkshake?  | 8     | O |
| 9.  | Pictogram: The most popular drink received ___ votes.   | 22    | Y |
| 10. | Table: How many more people attended the Sunday Garden Party rather than the Saturday one?                        | 60    | A |
| 11. | Bar chart: The least popular food received ___ votes.   | 9     | L |
| 12. | Line graph: By how much did the temperature, in °C, drop in the last hour of the Street Party?                    | 4     | T |
| 13. | Table: How many people attended Saturday’s Dinner Party?  | 1,561 | E |
| 14. | Bar chart: How many people voted in the favourite food survey altogether?   | 60    | A |

**What is the Queen’s favourite drink?**

**A cup of royal-tea.**