

MUSIC



YEAR 6

Activities and learning materials

BASS CLEF



What is bass clef?

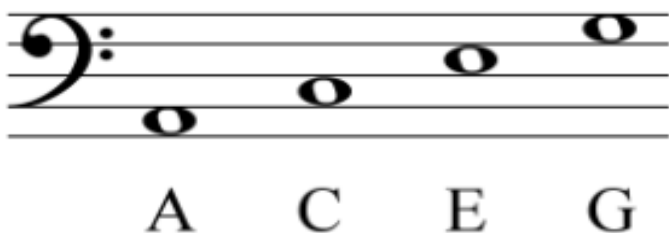
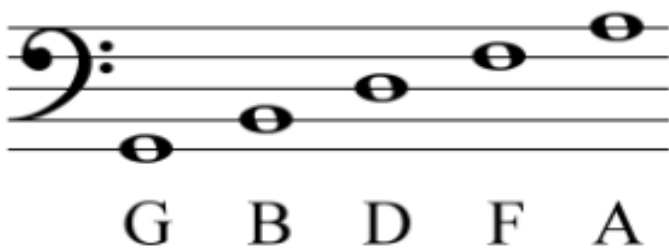
F clef (English) also known as **the bass clef**, the **F clef** is used to indicate pitches below **middle C**. The pitch "**F**" is indicated by placing a note on **the 4th line**. Originally the clef designation of "**F**" came about through the use of the letter "**F**" at the end of the staff to indicate the position of the pitch "**F**".

What is the difference between bass clef and treble clef?

Treble Clef and **Bass Clef**. Usually we use **treble clef** to right the notes for **high pitch** instruments (viola, flute, clarinet, trumpet and for right hand on the piano) and **bass clef** for low pitch instrument (cello, double bass, tuba and for left hand on the piano)



Notes name in bass clef

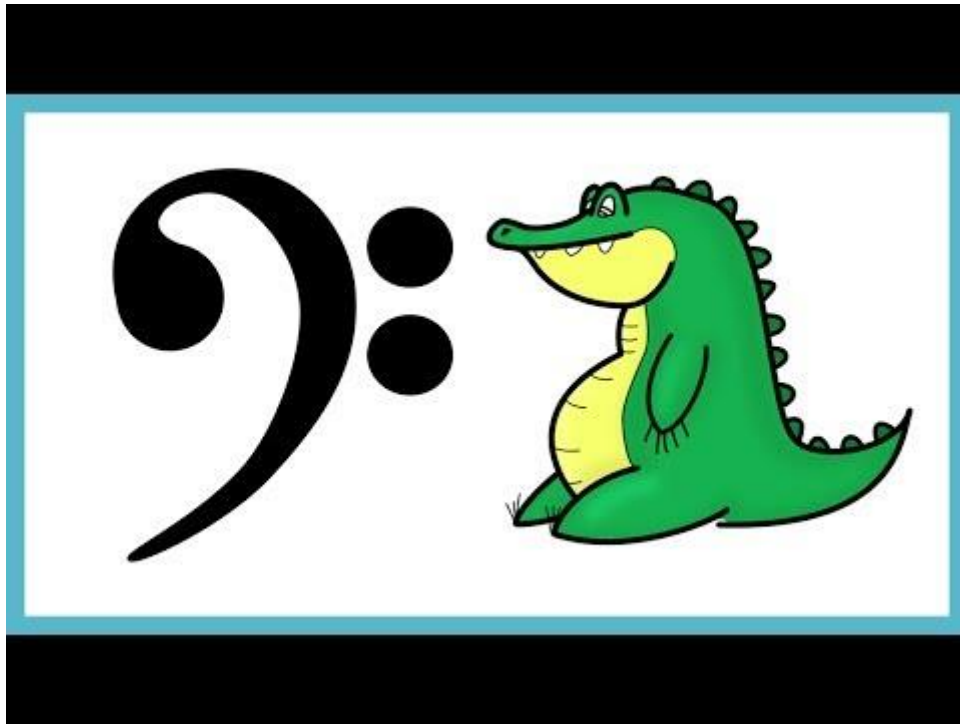


Click on this link to watch and learn about bass clef

<https://www.khanacademy.org/humanities/music/music-basics2/reading-music2/v/lesson-3-bass-clef-grand-staff-and-the-octave>

(you can copy and paste those links into your browser)

<https://www.musictheory.net/lessons/10>



Play game to recognize notes name

https://www.classicsforkids.com/games/note_names.php

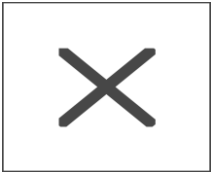
(you can switch to bass clef)

First/Last Name

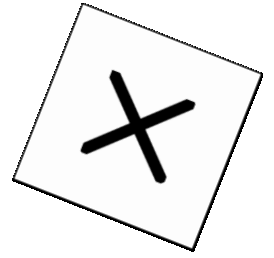
Year

Class

Date



Music Notation Word Challenge



Y O B E W V P A S T M L Q H H
I V T D R T C C N H A L L T K
C I E W X U I A T D A L W H A
G V M M C M T Y I R A H F G D
H A P U A U H A G Q O N M I E
T C O N R R C O N L F P T E S
N E Y A K A L L E G R O D E C
E D L R E T R A U Q I X H F E
E T N N T Z S P A C E S C L N
T S R E Y X J S H A R P T A D
X D E E C R G A I S T P I H S
I C O T B S E N I L T E P T Y
S S A B O L A J M K M A S H T
K S R D R N E P B I C E F V M
V R S L K A U Y T T R L I F A

ALLEGRO

ANDANTE

ASCEND

BASS

DESCEND

DYNAMICS

EIGHTH

FLAT

HALF

LARGO

LINES

NATURAL

NOTES

PITCH

QUARTER

RESTS

RHYTHM

SHARP

SIGNATURE

SIXTEENTH

SPACES

STAFF

TEMPO

TIME

TREBLE

VIVACE

WHOLE

+ + + E + + + A S T M + + H +
+ V T + R + + C N H A L + T +
+ I E + + U I A T D A L W H +
+ V M + + M T Y + R A H F G D
H A P + A U H A G + O N + I E
T C O N R R + O N L + + T E S
N E Y A + A L L E G R O + E C
E D L R E T R A U Q I + H F E
E T N + + + S P A C E S C L N
T S R E + + + S H A R P T A D
X + E E C + + + S + + I H S
I + + T B S E N I L T E P T +
S S A B O L A + + + M A S + +
+ + + + + N E + + I + E F + +
+ + + + + + + + T + R + + F +

(Over,Down,Direction)

ALLEGRO (6,7,E)
ANDANTE (8,1,SE)
ASCEND (7,13,NW)
BASS (4,13,W)
DESCEND (15,4,S)
DYNAMICS (2,8,NE)
EIGHTH (14,6,N)
FLAT (13,4,NW)
HALF (14,11,N)
LARGO (12,2,SW)
LINES (10,12,W)
NATURAL (9,2,SW)
NOTES (6,14,NW)
PITCH (13,12,N)
QUARTER (10,8,W)
RESTS (11,15,NE)
RHYTHM (6,6,NE)
SHARP (8,10,E)
SIGNATURE (12,9,NW)
SIXTEENTH (1,13,N)
SPACES (7,9,E)
STAFF (10,11,SE)
TEMPO (3,2,S)
TIME (9,15,NE)
TREBLE (2,9,SE)
VIVACE (2,2,S)
WHOLE (13,3,SW)